



Nature Towns and Cities

Urban Green Infrastructure
Monday 21 October 2024



National Trust

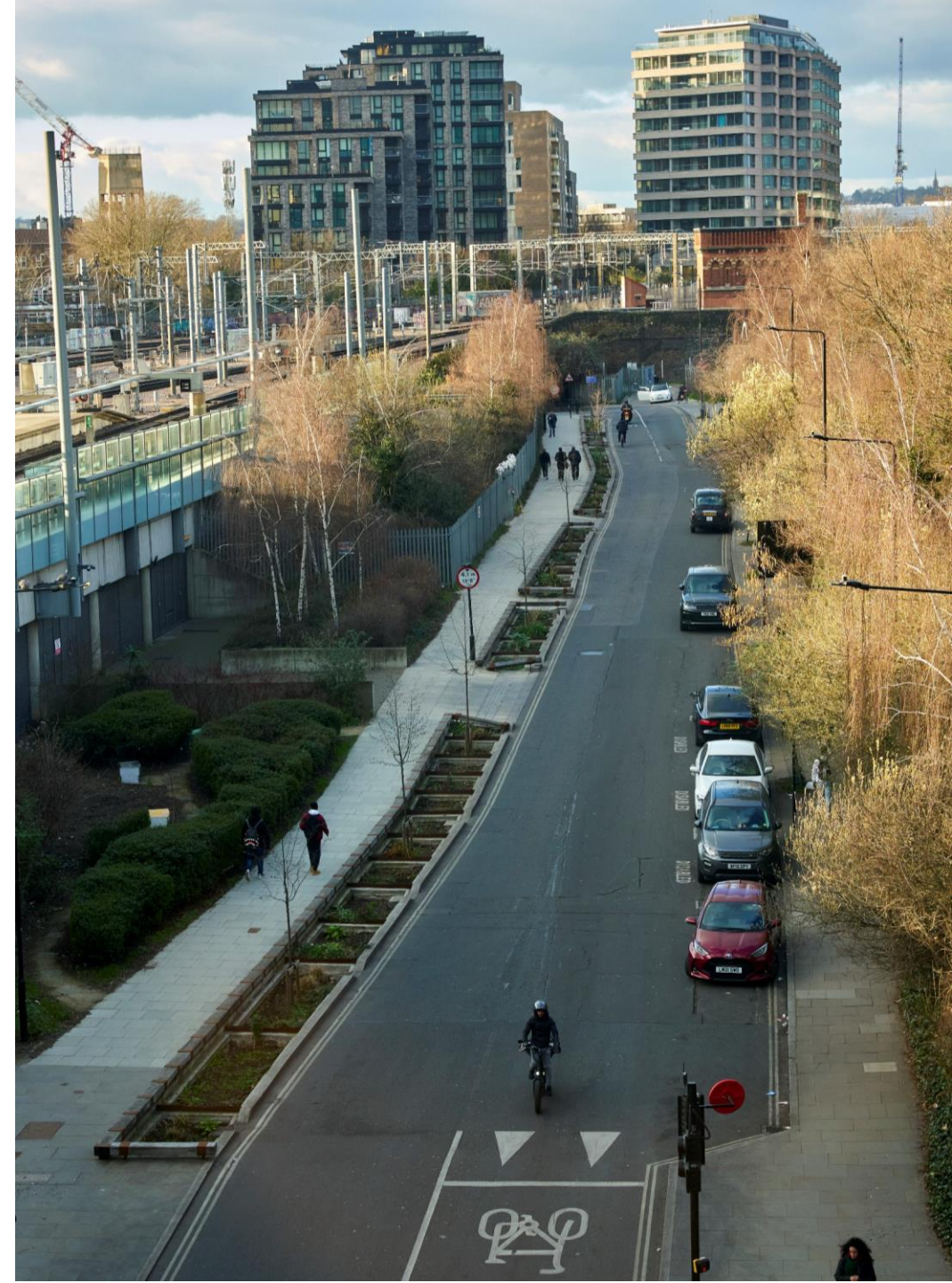


Heritage
Fund



Agenda

- | | |
|-------------|--|
| 15:00-15:10 | Welcome and Housekeeping |
| 15:10-15:15 | Introduction to Urban Green Infrastructure |
| 15:15-15:30 | Nottingham City Council: Creating substantial new green spaces |
| 15:30-15:45 | Camden Council and Islington Council: Highways Greening Accelerator |
| 15:45-16:25 | Panel Discussion |
| 16:25-16:30 | Close and Next Steps |
-



Who will you hear from

A range of speakers will be presenting today including several local authorities and programme members.



Matilda Cornwall-Jones,
Project Manager



Chair: Clare Warburton, Deputy
Director, Natural England



Victoria Bradford-Keegan,
Delivery Director



Claire Smith-Harris,
Nottingham City Council



Eddie Curry, Nottingham
City Council



Maddy Gunn, Islington
Council



Joe Lewis, Camden
Council

About this webinar

By the end of the session, attendees will:

- Hear inspirational case studies on urban green infrastructure
- Have an opportunity to ask questions
- Hear key details about the Nature Towns and Cities programme and how to get involved

Helpful Information

- If you have any questions for speakers, please submit them using the Q&A feature throughout the presentations.
- Automatic captioning is turned on, you can adjust this in the settings at the bottom of your screen.
- If you have any technical questions or issues, please let us know the details in the chat and we can help you.
- This session is being recorded and will be available via our website in the coming days.



MiroBoard Introduction

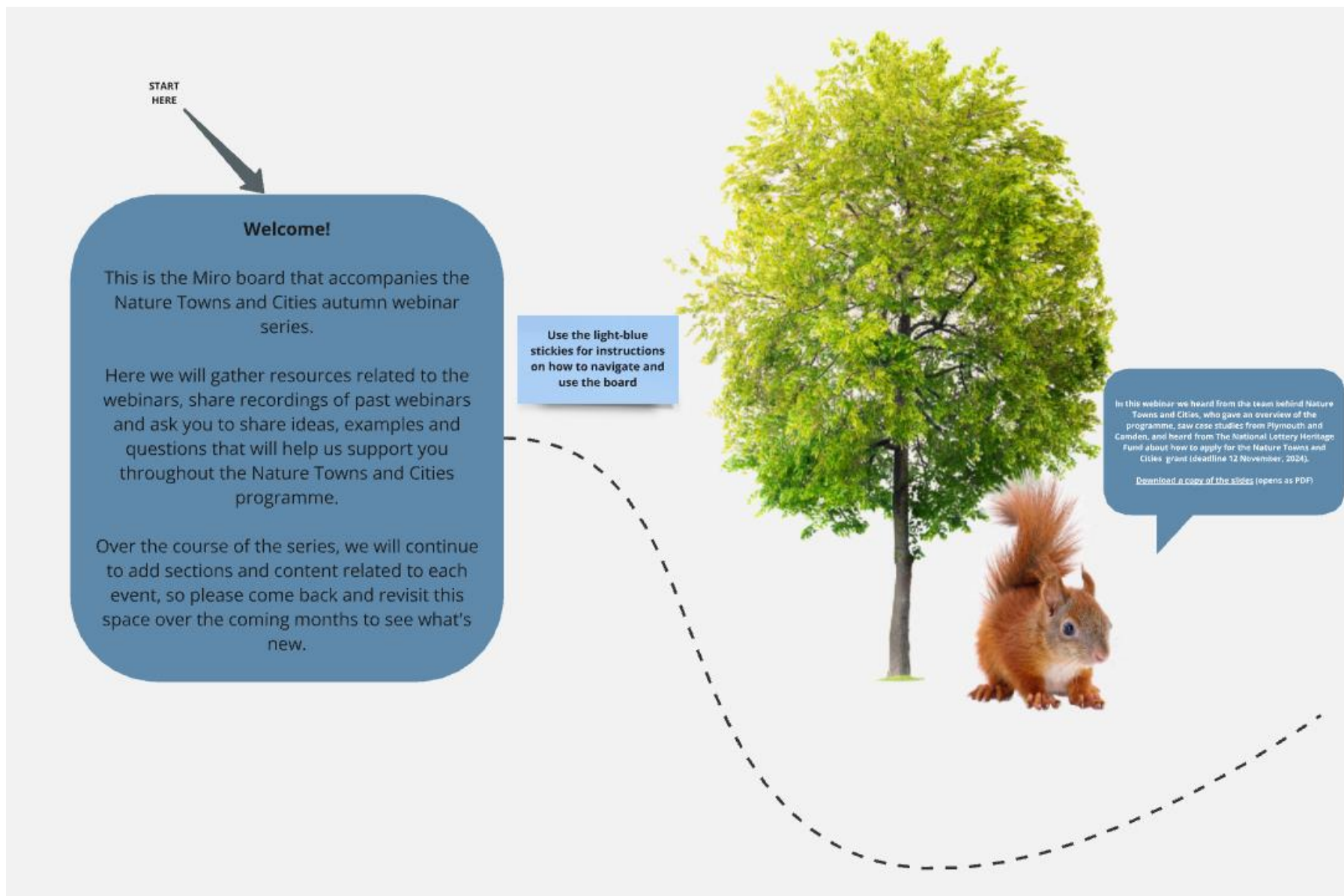
Throughout the webinar series we will be using an interactive whiteboard to capture your ideas and feedback.

Please access the whiteboard now using the link in the chat

Questions to work on together include:

How can we help support you and your work through the Nature Towns and Cities programme?

Please share examples of great work you've seen which might be inspiring to others.



What is Nature Towns & Cities



- A programme to help 100 towns and cities across the UK transform access to green space
- Overall goal is for millions more people to be able to enjoy time outdoors in nature close to home
- Help address the challenges facing towns and cities in C21st
- Create greener, fairer, healthier and more connected towns, cities and neighbourhoods
- Access support to put green infrastructure at the heart of future plans, priorities and investment
- Unlock further investment to help councils and communities achieve their ambitions
- Founded by National Lottery Heritage Fund, Natural England & National Trust
- Working closely with NatureScot, Natural Resources Wales & Northern Ireland Environment Agency.
- This is an invitation to join in, shape it, lead for change

Inclusive Network



Designed to build confidence, capability and connection

Open to all, and free to be a member.

- Provide access to knowledge and successful solutions
- Connect with experienced professionals, range of fields
- Enable collaboration and partnership
- Access to specialist support and advice to solve problems and unlock opportunities
- Help to lead for change, tap into collective wisdom
- Part of something bigger

For local government, community organisations, charities and professionals across the UK.

You'll be helped by your peers, sharing what works and able to take part in varied programme of events, cohort activities and training, a library of resources, as well as tailored support.

This is an open invitation to join the Nature Towns and Cities Network.

Sign up to the events and the mailing list via the website

www.naturetownsandcities.org.uk

Introduction to Urban Green Infrastructure



What is Green Infrastructure?

Nature doing a job



Healthier,
more resilient
Nature



Healthier,
more resilient
Places



Healthier,
more resilient
People



Healthier,
more resilient
Economy

How can Green Infrastructure help Local Authorities?

Planning and Transport

- Embed the GI Standards into Local Plans, Strategies and Local Design Codes
- Consider how GI can be incorporated into new development and retrofitted across a town/city and used to attract new business investment

Net Zero and Climate

- Consider how GI can help to mitigate and adapt to climate change
- Consider how GI can be integrated into roads to reduce runoff, town centres to reduce flooding and provide cooling, and for low carbon travel.

Targeting for Health benefits

- Target interventions at areas with poor access to green and blue space, high IMD and high population density, especially where inequalities in health.

Management Efficiencies

- Consider areas where annual grass mowing regime could replace more regular cutting to enhance biodiversity eg road verges, rewilding parks etc

Funding

- Use GI strategy to develop a pipeline of investable projects that can attract public, private and philanthropic funding.
- Development of urban habitat banks.
- Use of Special Purpose Vehicle to ringfence investment in green infrastructure

Green Infrastructure Framework

- Principles and Standards for England

What is the Green Infrastructure Framework?

The Green Infrastructure Framework supports the greening of our towns and cities as part of the Nature Recovery Network. It sets out what good looks like for local planning authorities, developers, parks and greenspace managers and communities. It provides tools to help plan and design green infrastructure networks that deliver multiple benefits. The five main products in the Framework are:

Green Infrastructure Principles

Why, What and How of good green infrastructure

Why	1. Nature 2. Health 3. Economy 4. Water 5. Climate
What	1. Multifunctional 2. Varied 3. Connected 4. Accessible 5. Responds to Character
How	1. Partnership and Vision 2. Evidence 3. Plan Strategically 4. Design 5. Manage, Value and Evaluate

Green Infrastructure Standards

National standards for green infrastructure quantity and quality.

Green Infrastructure Mapping

Mapped datasets to support the standards



Green Infrastructure Planning and Design Guide

How to design good quality green infrastructure



Process Journeys

How to apply the products in the Framework for Planners, Developers and Neighbourhood Planners



For more information scan the QR code or copy the link:

<https://designatedsites.naturalengland.org.uk/GreenInfrastructure/Home.aspx>

A large, mature tree with thick, dark bark is covered in dense, vibrant pink blossoms. The tree's branches spread across the upper half of the frame. In the background, a lush green lawn is dotted with other trees showing early spring foliage in shades of green and yellow. A black metal park bench sits on a light-colored path in the lower right. The overall scene is bright and cheerful, representing a park in Nottingham.

Welcome



Nottingham
City Council



Nottingham's Urban Green Infrastructure

A new greenspace strategy and a new city 'Green Heart' park

- How are we launching a new Greenspace strategy – how have we used Urban Green Infrastructure principles to inform connect urban greening, mitigate climate change and maximise cross sector opportunities.
- How did we utilise external funding opportunities, partnership working and mass stakeholder engagement event to create a new 'Green Heart' park for the city.



Nottingham
City Council

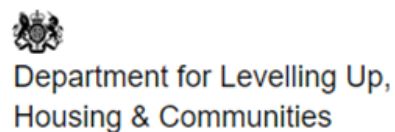
Future Parks Accelerator – future sustainable service delivery

Funded through National Lottery Heritage Fund & Department for Levelling Up, Housing and Communities & National Trust

3-year programme with a dedicated project team

Consideration given to;

- Robust stakeholder engagement
- Asset mapping, collating insight and data, natural capital evaluation
- Cross sector partnership opportunities
- Blended funding and finance models



Our amazing greenspaces

Nottingham City Council has a historic network of open and greenspaces contributing to its image as a green city. We look after parks, playgrounds, nature reserves, allotments, cemeteries and community spaces for an increasing resident population of over 320,000 people.

Nottingham's parks and greenspaces cover **1,670 hectares** (the same as) **1,113 football pitches**



Our total public green/blue spaces cover **38.1%** of the city's area (not including private gardens)



Tree canopy cover **13.75%** across the city



Nottingham's trees, plants and soil store over **5,000 tonnes** of CO₂ from the atmosphere every year



Over **90%** of people feel their **park is important** to their neighbourhood

1.1 million visits per month to our parks and open spaces with **63%** of residents visiting at least **once per month**



Small green spaces contribute **£65 million** per annum in health benefits to the city and contain **77%** of the city's play areas



120 of cycle paths **Km** and **480km** of signed Routes



Nottingham's Green Guardians volunteering programme delivered over **10,000 hours** in Years 1 and 2



Almost **24,000 trees** planted across the city in 2022 plus over **13,500 flowering bulbs**



Engaged with over **300** registered volunteers and green groups with **600** planned activities delivered



Winner of APSE Best Parks and Green Spaces Service team of the Year (21/22)



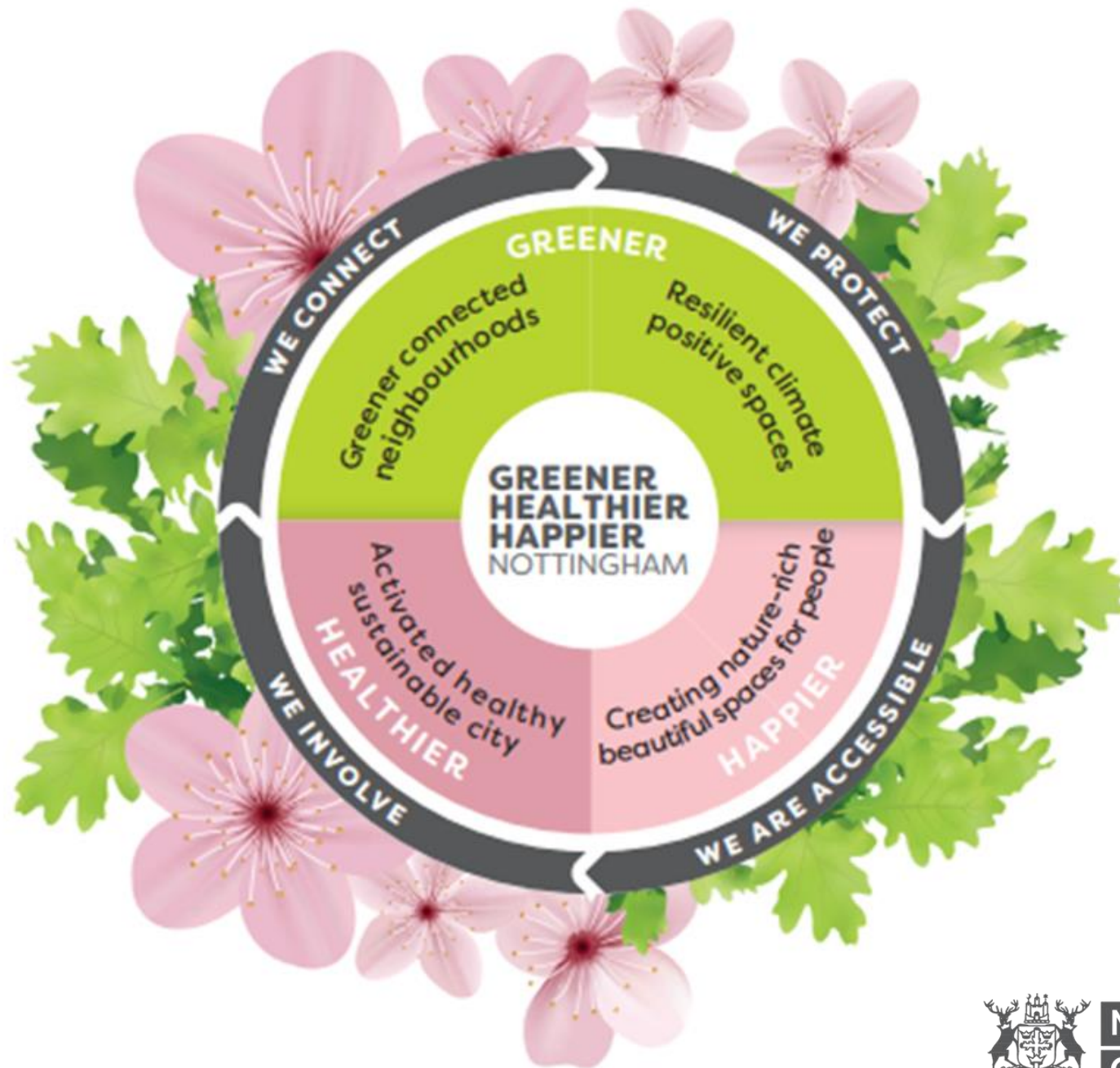
Increased annual local production nursery growing to over **900,000 plants**



5 pioneering Tiny Forests planted with **EarthWatch** delivered as well as 2 Blossom Together projects with the **National Trust**



Nottingham
City Council



Nottingham
City Council

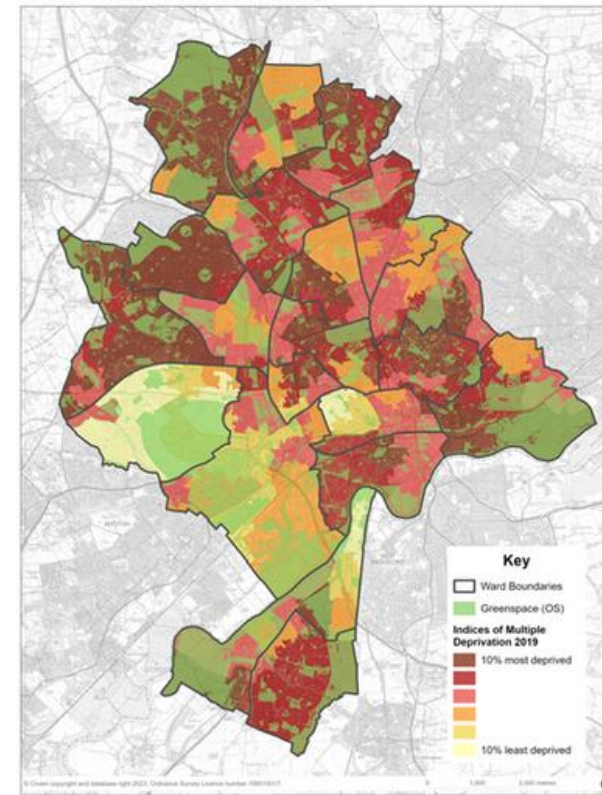
Greener, connected neighbourhoods

Nottingham will grow by 5% over the next 20 years. A focus on environmental justice will provide for increasing demand.

We are working towards the Natural England Urban Greening Factor Standard target of 40% - (Nottingham currently at 38.1%).

We will provide better connected green spaces giving greater access extending the environmental benefits for people, nature and wildlife.

Indices of Multiple Deprivation (2019)



**Nottingham
City Council**

Resilient climate positive places

Nottingham City Council declared a climate and ecological emergency in 2019 - our green spaces contribute to mitigating the impacts of climate change.

Nottingham's green spaces are an important part of the city's air pollution and flood protection measures. Our soils, trees and plants absorb carbon and rainfall.

Nottingham's green spaces and trees provide shade and cooling during the summer months. Our Tree & Woodland strategy will support the targeted increase of tree canopy cover.



Same city, same day, same time:
two different streets.



Nottingham
City Council

An activated healthy sustainable city

Nottingham's open and green spaces provide nature connectedness for people.

Sustaining our open and green spaces helps people stay healthy, mentally and physically.

Consolidating partnerships with Public Health and Green Social prescribing connects people most at risk of health inequality to nature.

Food growing can happen in allotments and edible plantings in parks, urban orchards, open-access gardens, school gardens, and in -street planters.



Nottingham
City Council

Creating nature-rich, beautiful spaces for people

Volunteers are vital in co-creating and maintaining nature-rich beautiful spaces generating valuable skills and experiences. By developing new activities and experiences we move to a more inclusive and socially progressive model.

In undertaking the research for this strategy new thinking has been explored especially around play i.e. Make Space for Girls and Child Friendly Nottingham.

More effective consultation and participation will make our spaces more relevant, accessible and fit for future generations.



What next ?

Adoption at Executive Board level of Greener, Healthier, Happier Nottingham

Continuing to work with NLHF and National Trust to develop our biodiversity initiatives

Maintain and increase Gearing Ratio of 19:1 to aid budget constraints through further inward investment

Biodiversity Net Gain Duty – guidance, SPD and implementation

Contribution to Local Nature Recovery Strategy



Nottingham
City Council

The Green Heart

Where we started



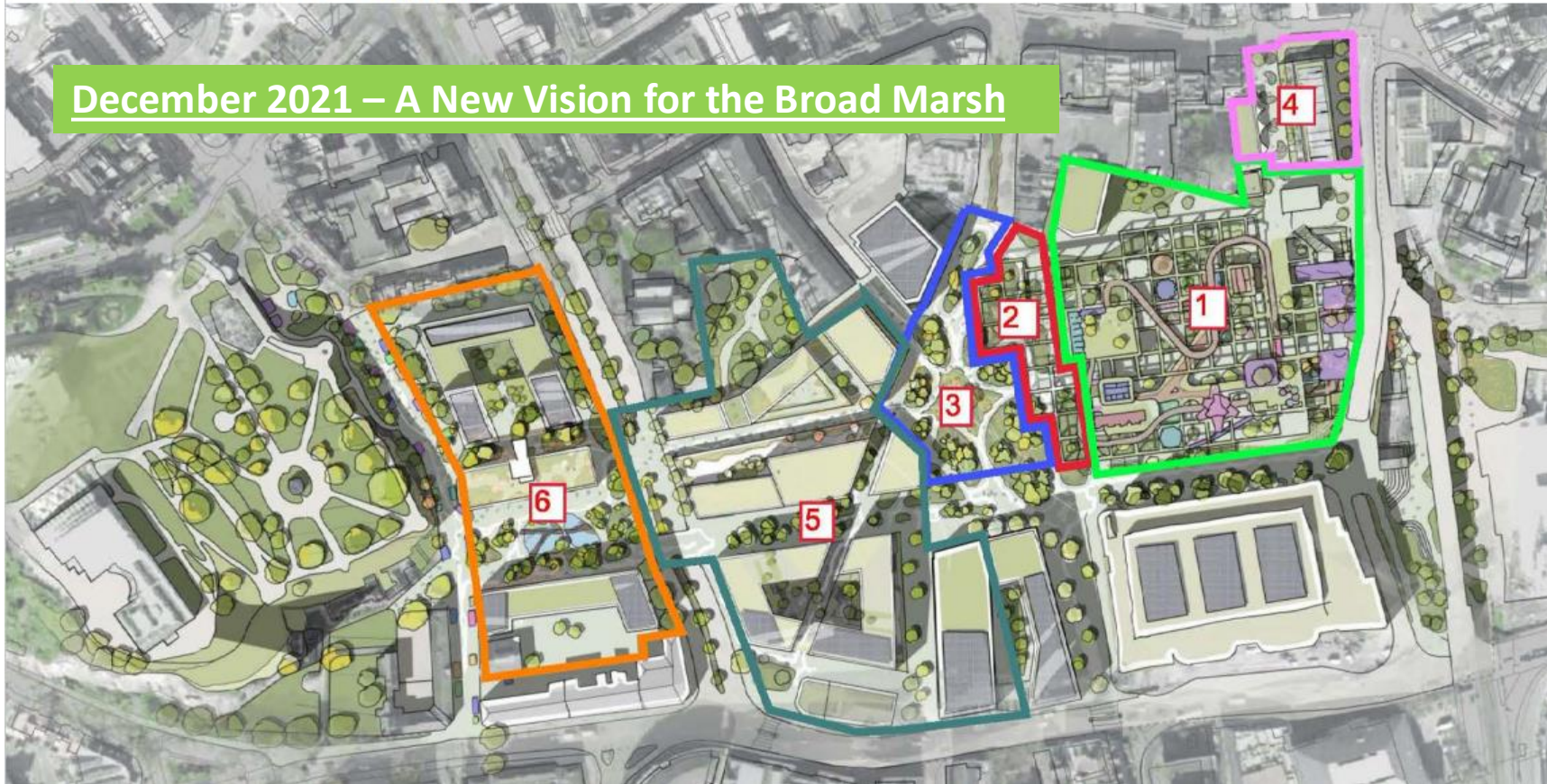
Nottingham
City Council





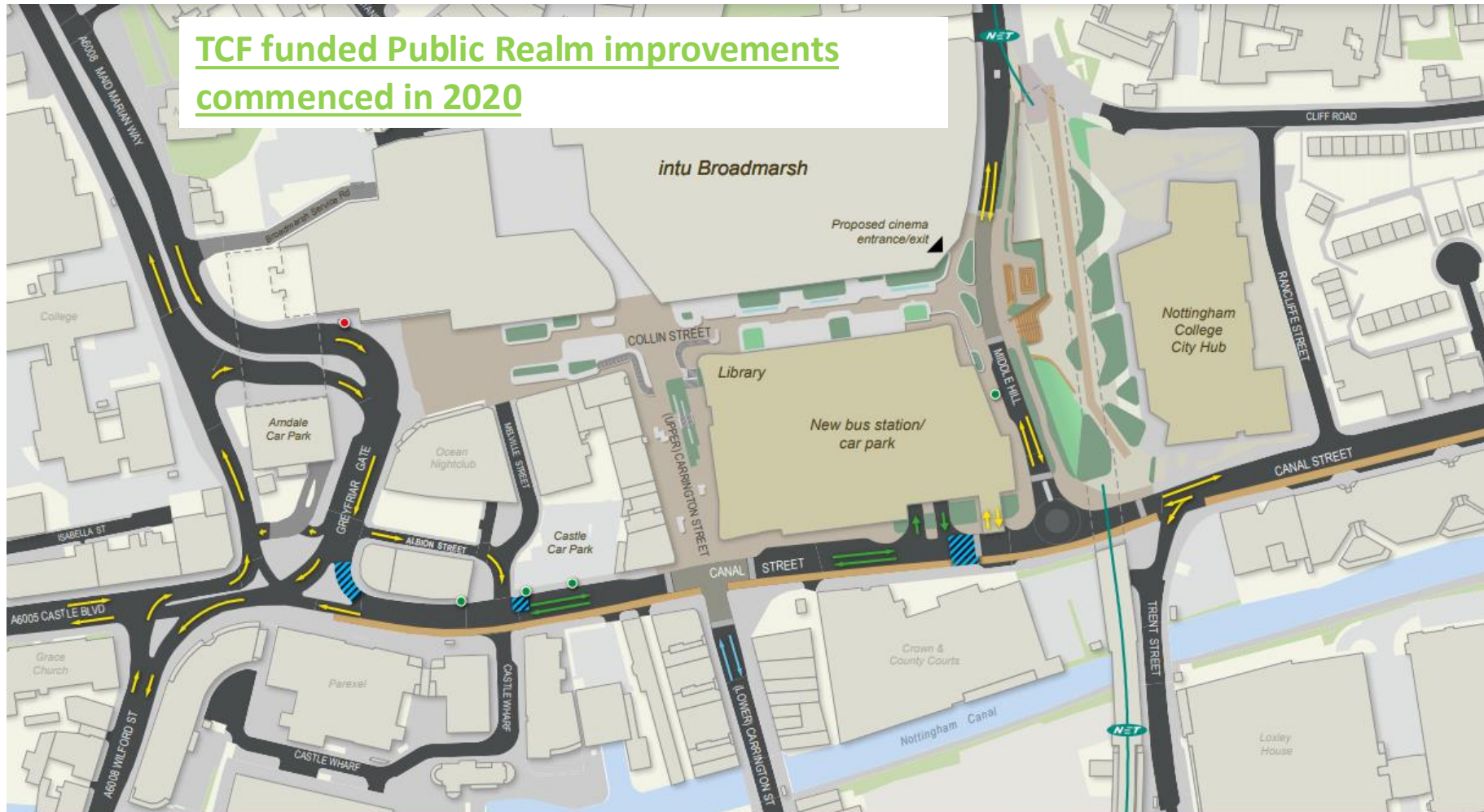
The Vision Masterplan

December 2021 – A New Vision for the Broad Marsh



Nottingham
City Council

TCF funded Public Realm improvements
commenced in 2020



Broadmarsh proposed scheme



**Nottingham
City Council**

Blue Corridors



Delivering the Vision



- **27 Jul 2023**
- **The Green Heart at Broad Marsh due to commence on site**
- Nottingham City Council have released new images announcing this major transformation due to start later in the year. The vision by Heatherwick Studio and design of the Green Heart is unique to Nottingham. It is being developed by Townshend Landscape Architects along with the Council, Nottinghamshire Wildlife Trust, with Heatherwick Studio retained as a strategic design advisor.

The scheme will enhance biodiversity and ecological connectivity by introducing green, ecologically rich and diverse linked spaces, providing habitats and food for wildlife. Urban wetlands will filter rainwater, further expanding the range of diverse natural habitats. For humans, there are planned pathways, pocket spaces, lawn areas, and locally sourced stone seating, to immerse oneself in an ecologically rich landscape right in the heart of Nottingham's urban cityscape.

TLA are already working on Collin Street, a playable new pedestrian public space that links to the Green Heart, Sussex Street and the wider Broad Marsh area.



Nottingham
City Council

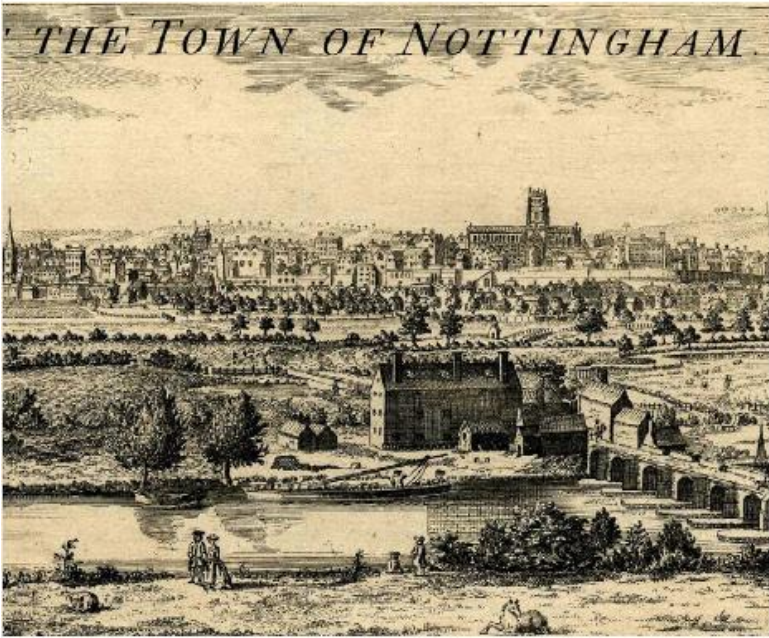
‘NOTTINGHAMNESS’

**Creating a place that is part of
Nottingham**

**Nottingham’s iconic landscapes can
provide a rich source of inspiration for
developing distinctive and characterful
public realm.**

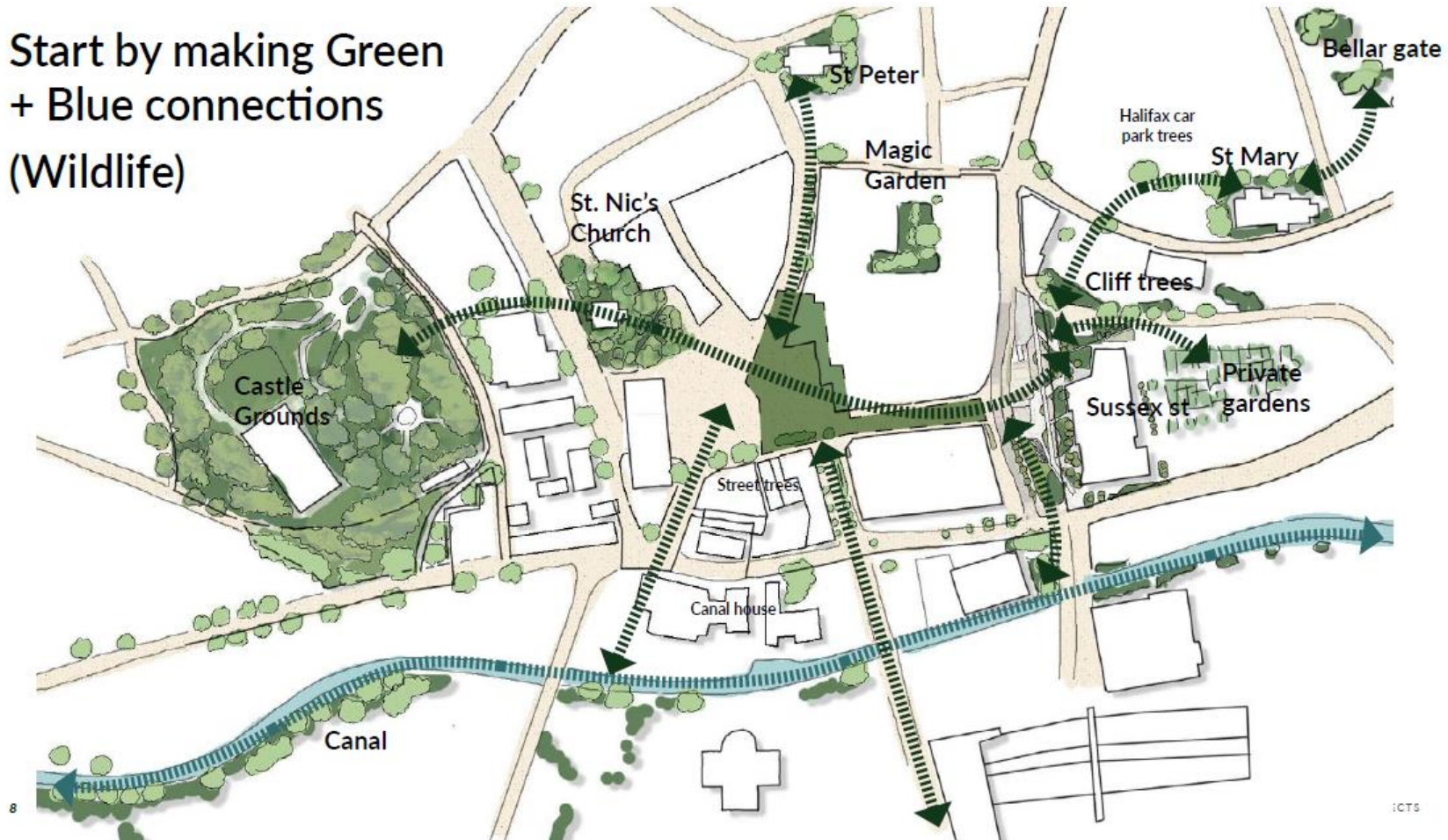


**Nottingham
City Council**

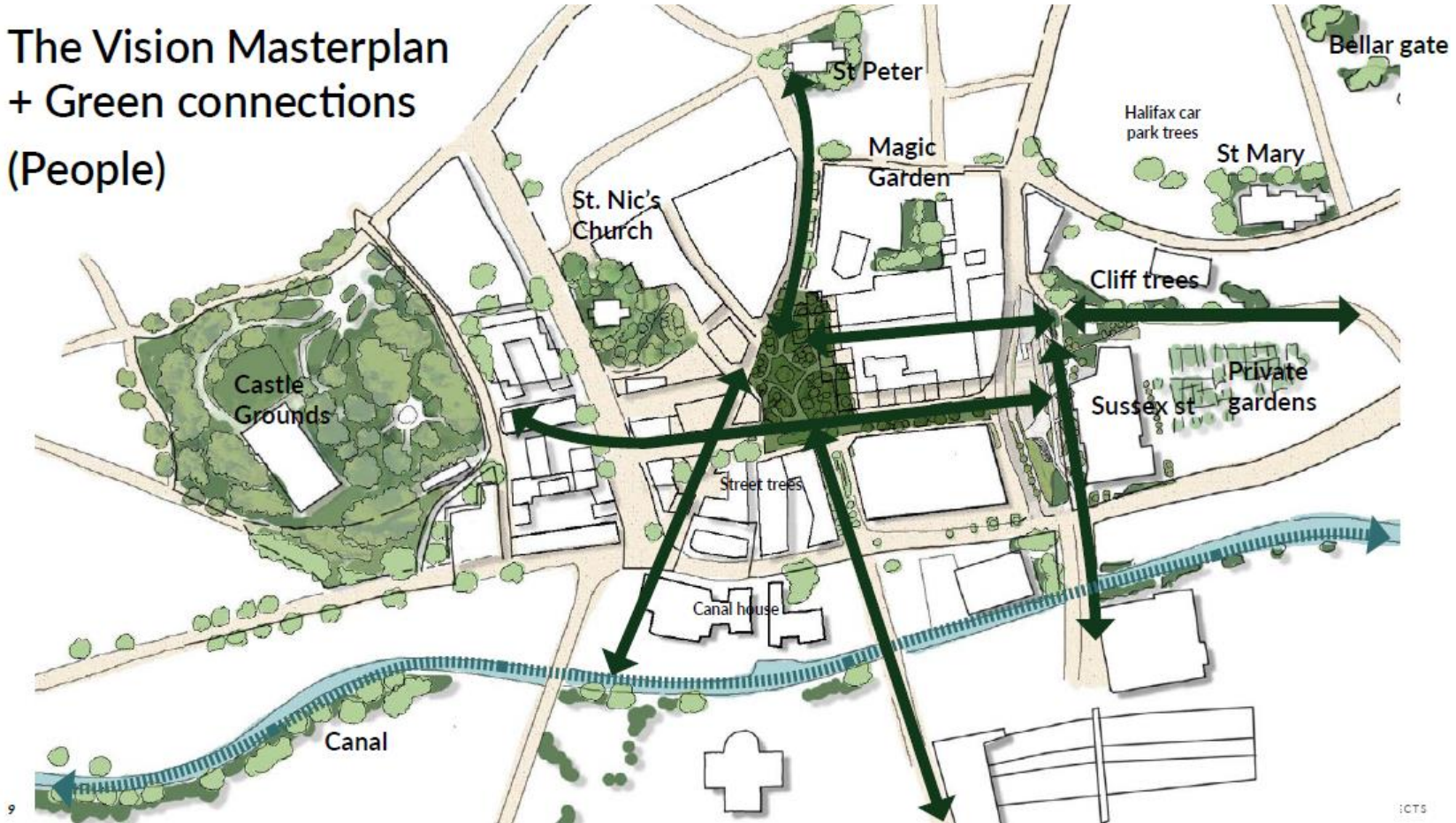


Could we put the Marsh back into Broad Marsh?

Start by making Green
+ Blue connections
(Wildlife)



The Vision Masterplan + Green connections (People)





Castle Grounds



St. Nic's
Churchyard



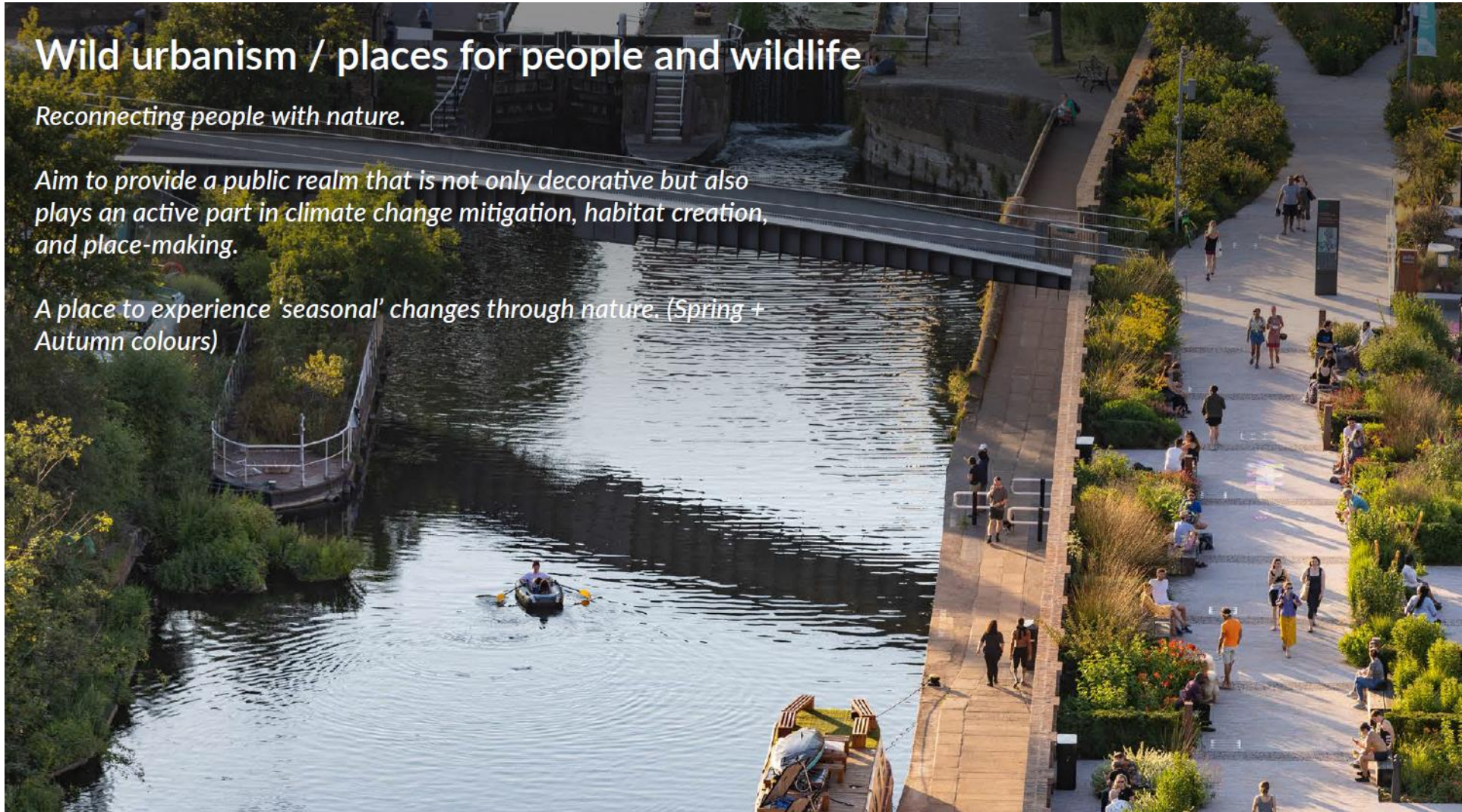
es

Wild urbanism / places for people and wildlife

Reconnecting people with nature.

Aim to provide a public realm that is not only decorative but also plays an active part in climate change mitigation, habitat creation, and place-making.

A place to experience 'seasonal' changes through nature. (Spring + Autumn colours)



Climate adaptive and wildlife friendly planting

Opportunity to ensure lasting benefits for wildlife through Biodiversity Net Gain.

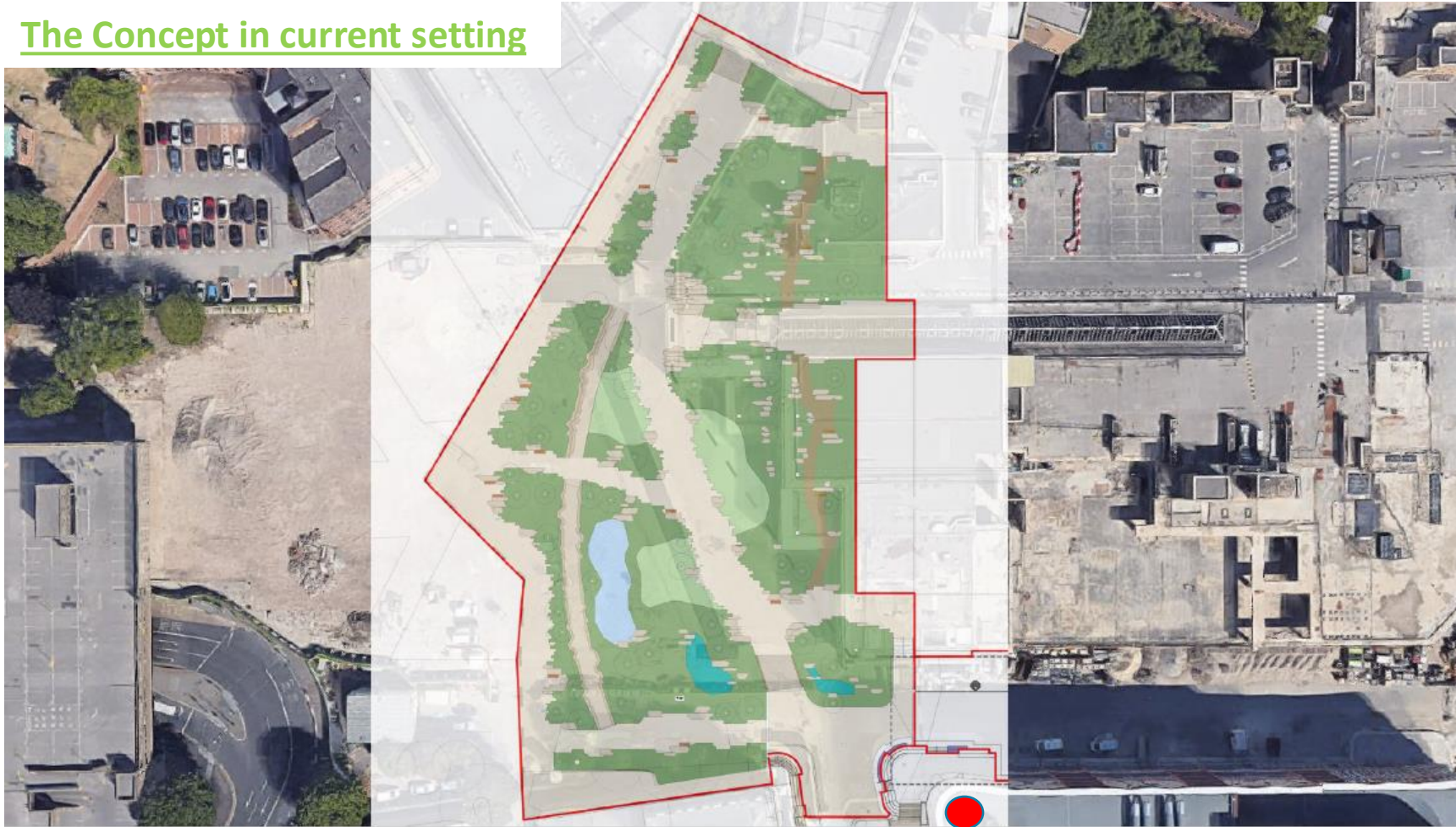
Work with Nottinghamshire Wildlife Trust to exceed the required 10% BNG targets.

Sustainable landscapes through smart planting achieved through a mix of native and non-native species.

Provide increased tree species diversity for climate and disease resilience.



The Concept in current setting







Nottingham
City Council



Nottingham
City Council



Nottingham
City Council



Nottingham
City Council

Future Maintenance

- Challenges – short medium and long term.
- Extension to post construction maintenance period from 1 – 3 years ensuring planting and landscape matures pre adoption.
- Now in active talks with Homes England about potential 5-year funding support Year 4 onwards
- Homes England development site will offer levies re rentals.
- Activation and community engagement will continue to scale and build 'value'.



A large, mature tree with a thick, gnarled trunk is in full bloom with vibrant pink cherry blossoms. The tree's branches spread across the top half of the frame. In the background, a lush green lawn is visible, with several other trees in various shades of green. A black metal park bench sits on a paved path in the lower right. The overall scene is a peaceful park setting in spring.

Thank you



Nottingham
City Council

Camden and Islington Highways Greening Accelerator

October 2024

Project summary



- This programme set out to explore creative and innovative ways of converting 'grey to green' - using highways land to provide access to nature
- Overall aim to improve the quantity and quality of Green Infrastructure delivered as well as helping to create a collaborative, cross-departmental working culture where urban greening is celebrated.
- A major part of this project involved learning and skills development with officers who are involved with greening projects.
- We also looked at ways to ensure that investment in highway greening is effective, efficient and contributes to reducing inequalities by targeting areas of greatest need whilst also supporting vital ecosystem services.



Freeling Street

Community led greening proposals with public art interventions informing a permanent scheme

Ambler School Street

Improved air quality and a safer environment for pupils

Vorley Road

Greening the grey on public highway



Ferdinand Street SuDS

Flood risk management

Fleet Valley Pocket Park

Multifunctional green space

Alfred Place Gardens

Addressing deficiency in access

Training programme



- Initial assessment of transport/highways officers' skills, knowledge and experience in delivering green infrastructure in order to address areas of needs and skills gaps
- In person site visits and online webinar style sessions, making use of speakers who were experts in their field.
- Topics included: SuDS, Hard Materials, Planting, Ecology, Engagement, Delivery processes
- Also provided a regular space for open questions and networking
- Recorded sessions, but main legacy in development of guidance documents

Green Infrastructure for Streets

A practical guide to design,
delivery & maintenance



UDL

Camden

ISLINGTON
For a more equal future



Planting Design Guide For Streets

LD&DESIGN

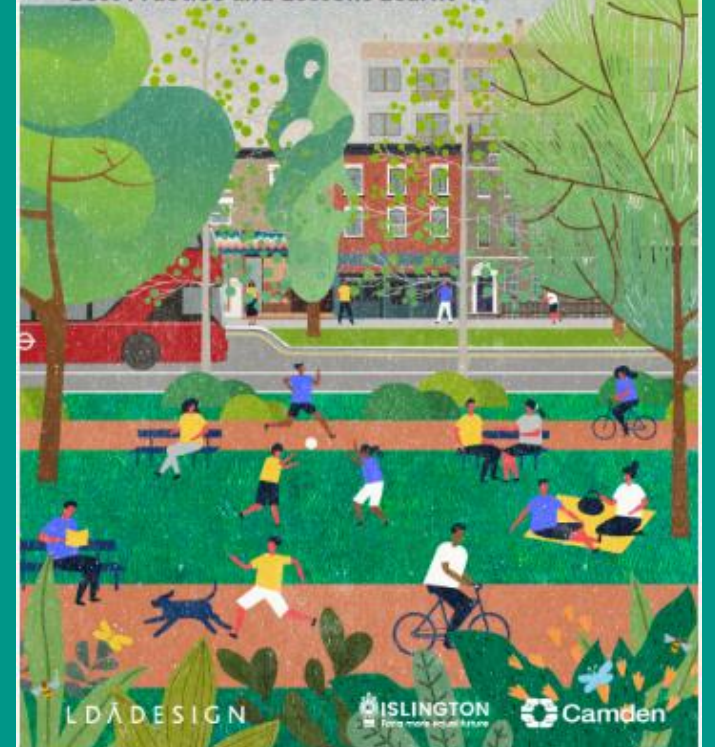
ISLINGTON
For a more equal future

Camden

April 2024

Highways Greening

Best Practice and Lessons Learnt



LD&DESIGN

ISLINGTON
For a more equal future

Camden

Green Infrastructure for Streets

A practical guide to design,
delivery & maintenance

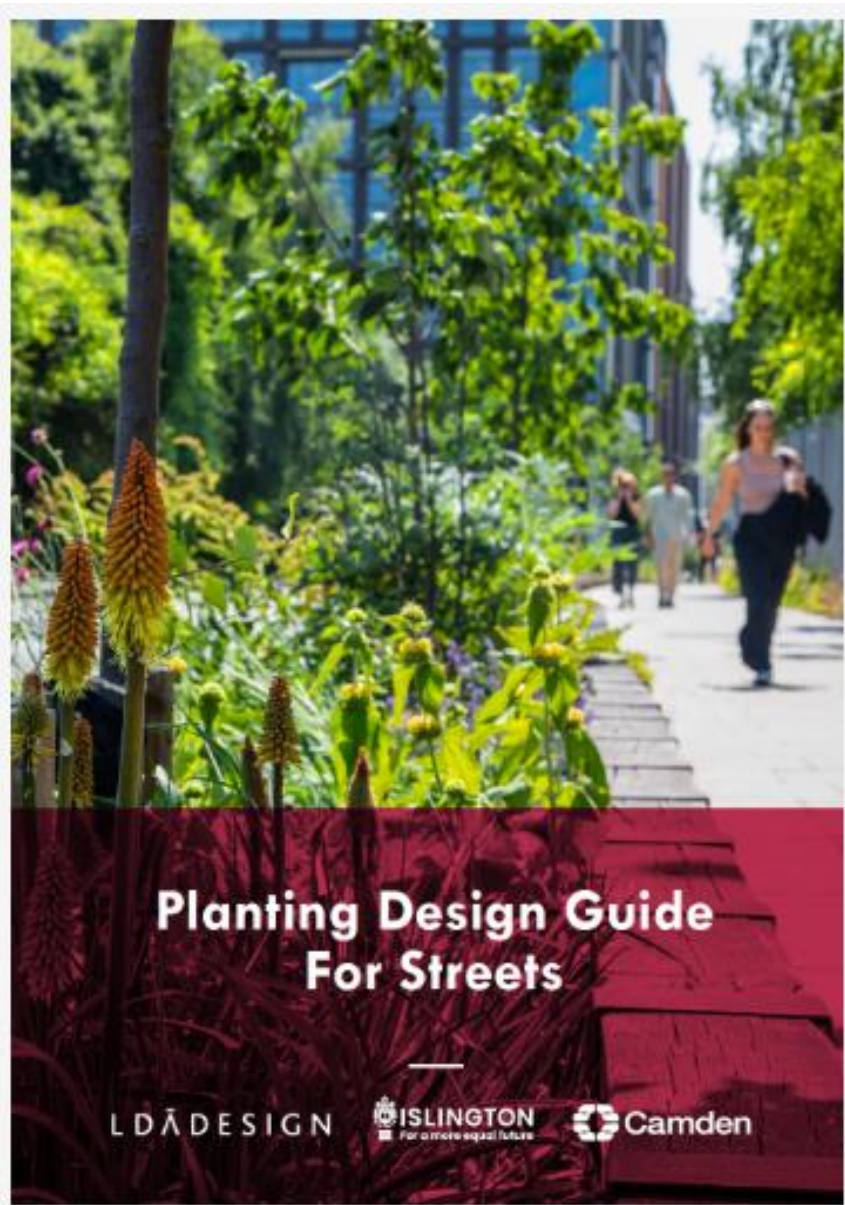


UDL

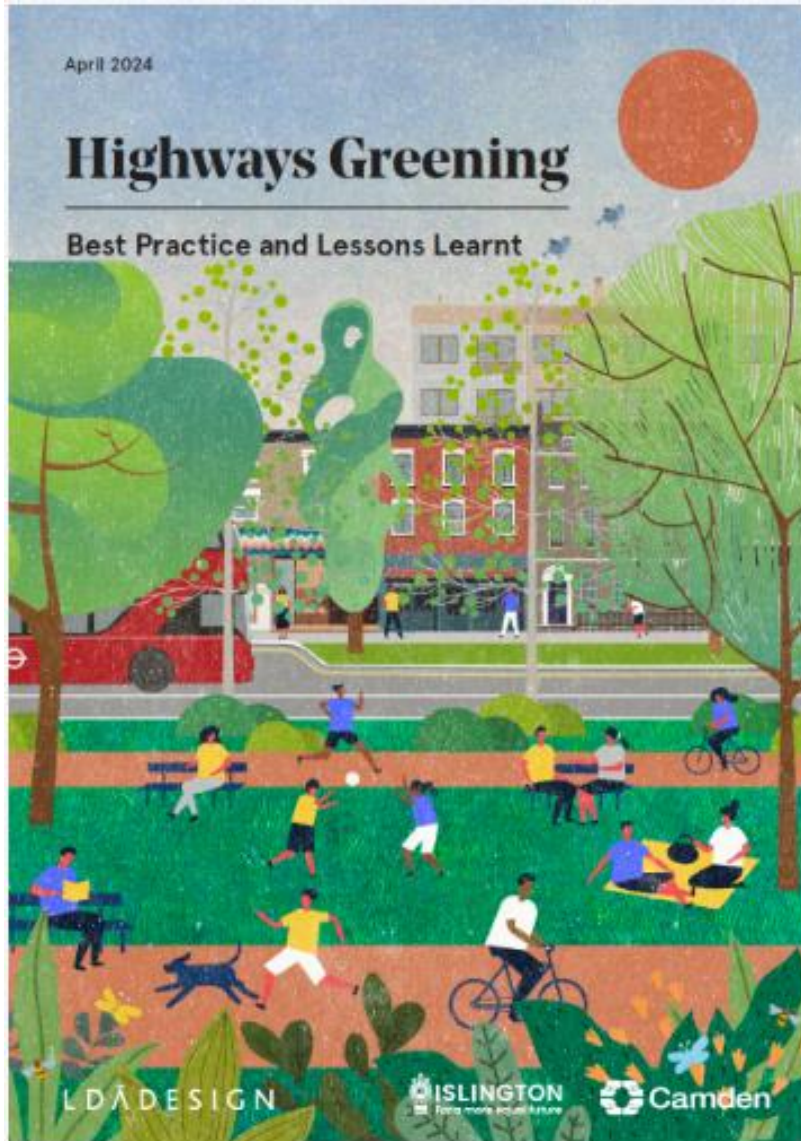
Camden

ISLINGTON
For a more equal future

- Aimed at officers who are charged with preparing policies and designing, delivering and maintaining new and existing green streets and spaces.
- Covers practical guidance on designing green and climate resilient streets incl. SuDS and drainage, detailing and materials, planting and ecology



Practical guidance that provides key considerations for developing a planting specification for small scale planting schemes designed and delivered as part of local highways or street improvement projects.



- To highlight best practice in the planning, design, delivery and maintenance and management of green infrastructure in streets in the UK and around the world
- Case studies designed to be innovative and educate and empower council officers, central government organisations and anyone involved in the design and delivery of public realm within streets

Green Infrastructure for Streets Recommendations for delivering at scale

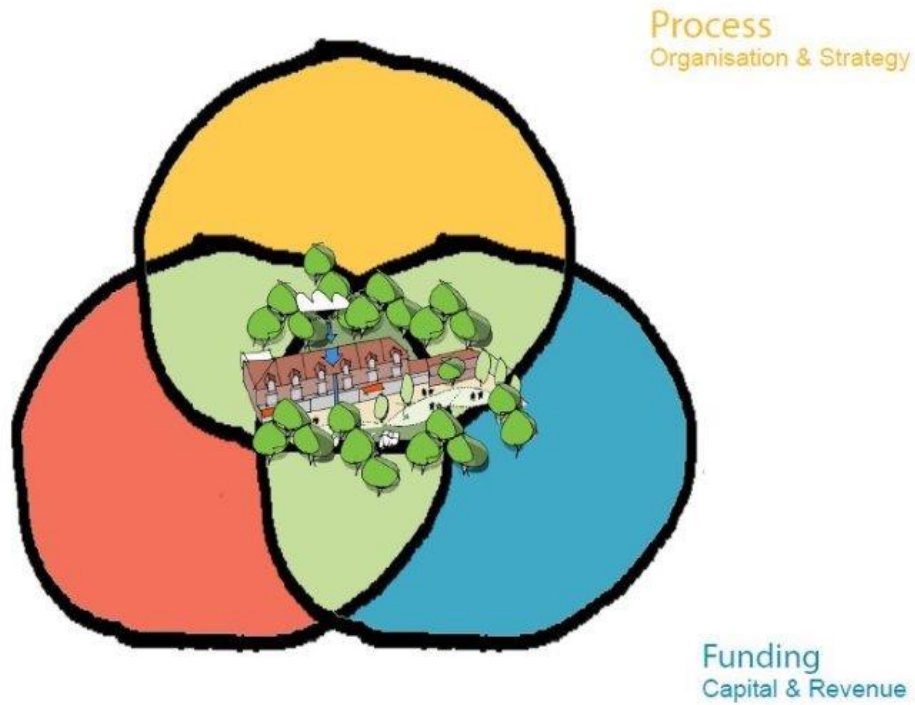


UDL

 Camden

 ISLINGTON
for a more equal future

- Identifies a number of areas that Local Authorities can address in order to improve the planning and delivery of GI
- Suggestions to take forward as boroughs develop GI strategies and implementation plans



PROCESS

Strong political leadership and the willingness to implement innovative changes will help deliver more transformational public realm projects.

RESOURCES

Projects need collaborative teams with the expertise and capacity to effectively deliver on time and to budget

FUNDING

The durability and long-term success of a scheme is reliant on how well it is maintained and managed over time and ensuring the design is adequately resourced.

Next steps

Supporting existing projects

Use the projects that are already underway in Islington and Camden as pilots to test the outputs of the HGA programme

Supporting officers

Continue to support officers with developing their knowledge and skills on GI by sharing internally

Strategy and policy

Use findings and mapping tool to inform forthcoming Green Infrastructure Strategy at LBI and LBC

Panel Discussion

Please use the Q+A feature to ask your question.



Clare Warburton,
Natural England,
Chair



Victoria Bradford-
Keegan, Delivery
Director



Claire Smith-
Harris,
Nottingham City
Council



Eddie Curry,
Nottingham
Council



Maddy Gunn,
Islington Council



Joe Lewis,
Camden Council

What can you do now?

1) Continue helping us build the interactive whiteboard

2) Book a place at the other webinars from now until December to get a taste of what's to come from the programme.

3) Sign up to the mailing list to be the first to hear more information about the programme including resources and events.

These are all accessible via the website:
naturetownsandcities.org.uk

If you need support, please email
info@naturetownsandcities.org.uk

Thank you!

