



# NEWQUAY ORCHARD

Jenny Hindson

Director of Communities and Landscapes

[Jenny.Hindson@newquayorchard.co.uk](mailto:Jenny.Hindson@newquayorchard.co.uk)

# About Us

- Help people have healthy food and wellbeing
- Increase inclusive access to alternative learning, education experiences and employers
- Create a more sustainable community in Newquay
- Support people to thrive alongside nature and wildlife
- Bring people together to make a positive difference



# Café and Venue

NEWQUAY ORCHARD

## SPRING 2026 EVENTS

**FRIDAY 3<sup>RD</sup> APRIL (GOOD FRIDAY)** INTERACTIVE EASTER TRAIL + KIDS CRAFT WITH BLAZE CHURCH

**SUNDAY 3<sup>RD</sup> MAY (BANK HOLIDAY)** SOUND OF SUNDAY – LIVE DJ SET

**FRIDAY 8<sup>TH</sup> MAY** DAVID ATTENBOROUGH'S 100<sup>TH</sup> BIRTHDAY OCEAN FILM SCREENING AND DISCUSSION WITH RISING TIDE

**SATURDAY 16<sup>TH</sup> MAY** EUROVISION PARTY HOSTED BY DRAG QUEEN ENYA HEART

**FRIDAY 12<sup>TH</sup> JUNE** CHEFS TABLE  
ORCHARD SUMMER SHOWCASE  
FIVE-COURSE SUPPER CLUB

**SATURDAY 13<sup>TH</sup> JUNE** NEWQUAY ORCHARD SUMMER FAYRE

**12<sup>TH</sup> – 21<sup>ST</sup> JUNE** NANSLEDAN ART TRAIL

**25<sup>TH</sup> JUNE** MIRACLE THEATRE: PEER GYNT  
A COMEDY OF TERRORS



# Grown

- Food is at the heart of our business
- Grown by staff, volunteers and students
- Strengthen agro-ecological, locally grown, healthy and accessible food system
- 8 tonnes of fresh, nutritious, sustainable vegetables
- Weekly Grown by Newquay Orchard veg bag
- Supply our own café
- Supply local restaurants and business partners
- Opportunities for supply to the health sector
- More than ..... education, skills, wellbeing, social connection and health



# Education



## **GROWING FUTURES**

AT NEWQUAY ORCHARD

- Sub-contractor to Cornwall Adult Education
- 16-18 Programme of study
- Up to 25 with an EHCP

Less pressure than mainstream college  
Manageable and enjoyable environment  
Feels safe  
Developing independence

My friendships are good. I like my friends and we meet up outside of the Orchard too. We banter a lot but we all support each other.

Building confidence with friendships, really wanting and needing to get out more too!

Reaching out first and striking/going out with the plans, I struggle with. Navigating feelings and relationships too.

I would like to have a job in sustainable horticulture or agriculture, so I can support the community and the planet. I would like to live as independently as possible, but that's probably a long way off – I still need support.

I am so pleased he is looking forward to it as it's been a bit of a roller coaster since leaving school. I am so grateful for everyone's support, you are all amazing.

Rosey loves the college – being outside as she describes feeling the warmth of the sun and the sense of freedom is exciting and makes her smile. She loves all of the college support crew and talks about them as trusted others – high praise indeed. We have never seen her so happy to do anything as she is to attend college - she's finding her place and value and this is something money could never buy.

# Health and Wellbeing

- NHS collaborations
- Community Health and Wellbeing Workers
- Mental Health Peer Support Worker
- CAMHS Goes Wild – mental health support for young people on the waiting list
- People in Mind - weekly drop in with health services and VCSE organisations
- Well Fed - diabetes management trial
- On site social prescribers from PCN
- On site independent counsellors and therapists
- Sauna and cold plunge therapy



Community Wellbeing drop-in  
**EVERY THURSDAY**  
**10AM TO 12PM**  
Heart & Soul Cafe at Newquay  
Orchard.

## Nature - Connection - Advice

Get involved with creative, nature-based activities, whilst connecting with others and talking in a safe space.



**Just drop in and say hi or contact us to learn more!**

Phone:

01637 877182

Email:

[info@newquayorchard.co.uk](mailto:info@newquayorchard.co.uk)

[www.newquayorchard.co.uk](http://www.newquayorchard.co.uk)

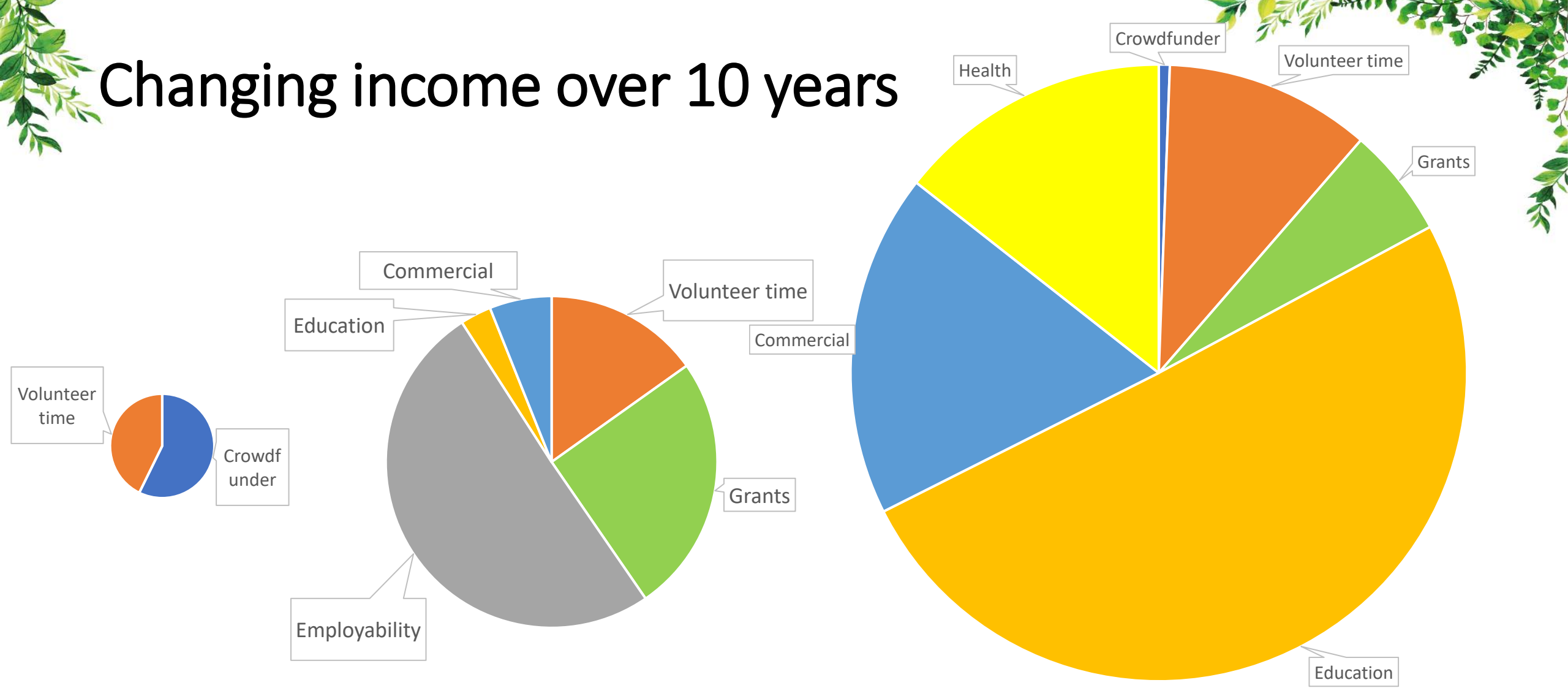
NEWQUAY  
ORCHARD

# Volunteering

- Built by the community for the community
- Community and businesses
- Over 10 years:
  - More than 1,000 volunteers
  - 92,605 hours
  - Age 18-78
  - More than 43% have a disability
  - Horticulture
  - Events
  - Business administration




# Changing income over 10 years



- Also, a small amount of social investment loan funding
- Volunteers are an essential asset
- Loss of employability contracts for adults
- Growth of youth education
- Reduced reliance on grants
- Emergence of health
- Commercial growth
- Building relationships with business




# So, what have we learnt?

- Formed from a grass roots movement 10 years ago
  - Community Interest Company (CIC) and Company limited by guarantee
    - Not for profit social enterprise - use assets and profit for public good rather than individual or other private shareholders
    - Can trade but must reinvest profits into stated social objectives
    - Assets are locked – assets and profits cannot be taken out of business
    - Annual community interest report to regulator – Office of the Regulator of Community Interest Companies - as well as financial report to Companies House
- 



# So, what have we learnt?

- Have a vision and purpose and use it to guide, learn and grow (theory of change)
  - Being a start up is very different to being a maturing company
  - Entrepreneurial minds need the support of good planning and being prepared to invest in systems and processes
  - Community and voluntary sector is a 'professional' sector
  - Get a good Board and make the most of the support, networks advice out there
  - Record your story and make sure you tell people about it
- 

# So, what have we learnt? Unrestricted income

- Crowdfunding and donations
  - Worked well at the start but needs A LOT of effort around comms
  - Installed tap and go donation points but needs good communication to encourage use
  - New website will include donation button
  - Don't ask you don't get!
- Commercial income
  - Profit can be seen as a dirty word - have a clear purpose and simple communications
  - Provides unrestricted income and vital for resilience and financial stability
  - Takes time to build and needs investment in marketing
  - Higher risk - no guaranteed income unless you build your customer base and loyalty
  - Great educational and training value
- Business sponsorship
  - Building relationships with key local employers with aligned values (B-Corp)
  - Buy into our brand then engage in multiple services
  - Partnership working with the whole community is the only way we will achieve the changes for society and the planet that are needed
  - Corporate volunteering – we are trying to charge but it is not realistic for all businesses

# So, what have we learnt? Restricted income

- Grant funding:
  - Not all funders support CICs but a lot do
  - Lifeline in our early stages but our largest funders now expect us to seek other income
  - Building relationships is key to accessing funding
  - Often a focus on 'initiatives', something 'new' rather than core funding and roll out or replication of best practice
- Government funded contracts
  - Reflects government policy – this changes at an increasingly fast rate – it is politics
  - Helps to provide security of income for longer periods with performance requirements
  - Often partnership delivery - building relationships is key to accessing funding
  - Overhead funding has not been sufficient (15% generally)
- Education
  - Has been more stable but SEND funding review will have an impact
  - Dependent on recruitment ('B\*ms on seats')
  - Regulated provision
- Health
  - Community is a strategic priority for the NHS but local variation
  - Slow to change – it is one huge institution that is used to working in a certain way



# NEWQUAY ORCHARD

[www.newquayorchard.co.uk](http://www.newquayorchard.co.uk)

<https://www.facebook.com/newquayorchard/>

[https://www.instagram.com/newquay\\_orchard/](https://www.instagram.com/newquay_orchard/)

<https://www.linkedin.com/company/newquay-orchard/>

[info@newquayorchard.co.uk](mailto:info@newquayorchard.co.uk)

[jenny.hindson@newquayorchard.co.uk](mailto:jenny.hindson@newquayorchard.co.uk)

